

ENCLOSURES WITH HINGED LID

TECHNICAL INFORMATION

KG WATERPROOF ENCLOSURE RANGE

This very versatile and cost effective enclosure range has many advantages. The KG range has a high impact base and cover, pre-moulded knockouts and can be used with a separately supplied gear plate. The cover is removable and along with the low side walls access to equipment and wiring is easy.

The KG product range can also be supplied as a complete distribution board with protection cover, mounting rail, earth/neutral bars and legend kit.



IP65 WATERPROOF ENCLOSURE WITH HINGED LID

| | | | |
|---|-----------------|---|-----------------|
|  | KG9001 | Waterproof Empty Enclosure with Hinged Lid (253x136x115mm) - IP65 | \$58.32 |
| | KG9002 | Waterproof Empty Enclosure with Hinged Lid (253x168x115mm) - IP65 | \$65.21 |
| | KG9003 | Waterproof Empty Enclosure with Hinged Lid (253x217x115mm) - IP65 | \$73.66 |
| | KG9001IN | Waterproof Empty Enclosure with Grey Hinged Lid (253x136x115mm) - IP65 | \$58.32 |
| | KG9002IN | Waterproof Empty Enclosure with Grey Hinged Lid (253x168x115mm) - IP65 | \$65.21 |
| | KG9003IN | Waterproof Empty Enclosure with Grey Hinged Lid (253x217x115mm) - IP65 | \$73.66 |
| | KG901C | 4.5 Way Distribution Board including Earth & Neutral Bars - IP65 | \$81.34 |
| | KG902C | 6 Way Distribution Board including Earth & Neutral Bars - IP65 | \$92.00 |
| | KG903C | 9 Way Distribution Board including Earth & Neutral Bars - IP65 | \$105.19 |
|  | KGMP01 | Mounting Plate for KG9001 | \$3.83 |
| | KGMP02 | Mounting Plate for KG9002 | \$4.53 |
| | KGMP03 | Mounting Plate for KG9003 | \$5.52 |
| | KGTS01 | Din Rail for KG9001 | \$3.37 |
| | KGTS02 | Din Rail for KG9002 | \$4.53 |
| | KGTS03 | Din Rail for KG9003 | \$4.83 |
|  | KGPC01 | Protection Cover for KG9001 | \$16.56 |
| | KGPC02 | Protection Cover for KG9002 | \$19.87 |
| | KGPC03 | Protection Cover for KG9003 | \$22.71 |
|  | KGPN01 | Earth and Neutral Bar for KG9001 | \$19.81 |
| | KGPN02 | Earth and Neutral Bar for KG9002 | \$19.81 |
| | KGPN03 | Earth and Neutral Bar for KG9003 | \$23.97 |
|  | 3310167 | KG901C Distribution Board MCB Identification Set | \$6.03 |
| | 3310168 | KG902C Distribution Board MCB Identification Set | \$7.11 |
| | 3310169 | KG903C Distribution Board MCB Identification Set | \$8.32 |
| | AVS-16 | Connection Gland - IP65 | \$9.19 |
| | EVS-16 | Connection Gland - IP54 | \$1.84 |



WATERPROOF DISTRIBUTION BOARDS

TECHNICAL INFORMATION



KV9354



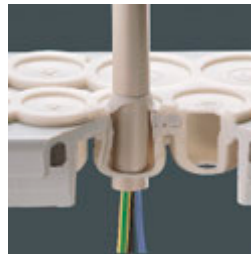
Multiple enclosure fixing points - can be fixed to pillars



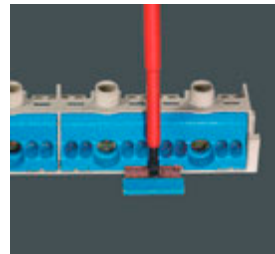
More space for wiring, convenient access to the wiring due to low walls



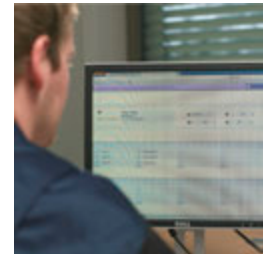
Perfect installation solution for cable trunking



IP65 Cable entry with elastic membrane glands



Neutral separable for various potentials via plug-in jumper



Editable circuit identification template at www.hensel-electric.de


IP65 DISTRIBUTION BOARDS WITH ELASTIC MEMBRANE GLANDS & E/N BARS




| | | |
|---------------|--|-----------------|
| KV9103 | 3 Way Distribution Board including Earth & Neutral Bars | \$79.81 |
| KV9104 | 4.5 Way Distribution Board including Earth & Neutral Bars | \$89.01 |
| KV9106 | 6 Way Distribution Board including Earth & Neutral Bars | \$99.91 |
| KV9109 | 9 Way Distribution Board including Earth & Neutral Bars | \$113.39 |
| KV9112 | 12 Way, 1 Row Distribution Board including Earth & Neutral Bars | \$176.49 |
| KV9118 | 18 Way, 1 Row Distribution Board including Earth & Neutral Bars | \$245.52 |
| KV9224 | 24 Way, 2 Row Distribution Board including Earth & Neutral Bars | \$260.88 |
| KV9236 | 36 Way, 2 Row Distribution Board including Earth & Neutral Bars | \$331.48 |
| KV9336 | 36 Way, 3 Row Distribution Board including Earth & Neutral Bars | \$345.30 |
| KV9448 | 48 Way, 4 Row Distribution Board including Earth & Neutral Bars | \$475.72 |
| KV9354 | 54 Way, 3 Row Distribution Board including Earth & Neutral Bars | \$544.78 |

WATERPROOF DISTRIBUTION BOARDS


IP65 DISTRIBUTION BOARDS WITH ELASTIC MEMBRANE GLANDS WITHOUT E/N BARS

| | | | |
|---|--|--|----------|
|  | KV8103 | 3 Way MCB Enclosure without Earth & Neutral Bars | \$59.85 |
| | KV8104 | 4.5 Way MCB Enclosures without Earth & Neutral Bars | \$69.06 |
| | KV8106 | 6 Way MCB Enclosures without Earth & Neutral Bars | \$82.87 |
| | KV8109 | 9 Way MCB Enclosures without Earth & Neutral Bars | \$92.08 |
| | KV8112 | 12 Way, 1 Row MCB Enclosure without Earth & Neutral Bars | \$144.25 |
| | KV8118 | 18 Way, 1 Row MCB Enclosure without Earth & Neutral Bars | \$202.58 |
| | KV8224 | 24 Way, 2 Row MCB Enclosure without Earth & Neutral Bars | \$222.54 |
| | KV8236 | 36 Way, 2 Row MCB Enclosure without Earth & Neutral Bars | \$280.84 |
| | KV8336 | 36 Way, 2 Row MCB Enclosure without Earth & Neutral Bars | \$288.51 |
| | KV8448 | 48 Way, 4 Row MCB Enclosure without Earth & Neutral Bars | \$422.02 |
| KV8354 | 54 Way, 3 Row MCB Enclosure without Earth & Neutral Bars | \$455.78 | |

IP65 DISTRIBUTION BOARDS WITH METRIC PRE-MOULDED KNOCK-OUTS WITH E/N BARS

| | | | |
|---|---|---|----------|
|  | KV7103 | 3 Way Distribution Board including Earth & Neutral Bars | \$79.81 |
| | KV7104 | 4.5 Way Distribution Board including Earth & Neutral Bars | \$89.01 |
| | KV7106 | 6 Way Distribution Board including Earth & Neutral Bars | \$99.91 |
| | KV7109 | 9 Way Distribution Board including Earth & Neutral Bars | \$113.39 |
| | KV9112M | 12 Way, 1 Row Distribution Board including Earth & Neutral Bars | \$176.49 |
| | KV9118M | 18 Way, 1 Row Distribution Board including Earth & Neutral Bars | \$245.52 |
| | KV9224M | 24 Way, 2 Row Distribution Board including Earth & Neutral Bars | \$260.88 |
| | KV9236M | 36 Way, 2 Row Distribution Board including Earth & Neutral Bars | \$331.48 |
| | KV9336M | 36 Way, 3 Row Distribution Board including Earth & Neutral Bars | \$345.30 |
| | KV9448M | 48 Way, 4 Row Distribution Board including Earth & Neutral Bars | \$475.72 |
| KV9354M | 54 Way, 3 Row Distribution Board including Earth & Neutral Bars | \$544.78 | |

IP65 DISTRIBUTION BOARDS WITH METRIC PRE-MOULDED KNOCK-OUTS WITHOUT E/N BARS

| | | | |
|---|--|--|----------|
|  | KV6103 | 3 Way MCB Enclosure without Earth & Neutral Bars | \$59.85 |
| | KV6104 | 4.5 Way MCB Enclosures without Earth & Neutral Bars | \$69.06 |
| | KV6106 | 6 Way MCB Enclosures without Earth & Neutral Bars | \$82.87 |
| | KV6109 | 9 Way MCB Enclosures without Earth & Neutral Bars | \$92.08 |
| | KV8112M | 12 Way, 1 Row MCB Enclosure without Earth & Neutral Bars | \$144.25 |
| | KV8118M | 18 Way, 1 Row MCB Enclosure without Earth & Neutral Bars | \$202.58 |
| | KV8224M | 24 Way, 2 Row MCB Enclosure without Earth & Neutral Bars | \$222.54 |
| | KV8236M | 36 Way, 2 Row MCB Enclosure without Earth & Neutral Bars | \$280.84 |
| | KV8336M | 36 Way, 3 Row MCB Enclosure without Earth & Neutral Bars | \$288.51 |
| | KV8448M | 48 Way, 4 Row MCB Enclosure without Earth & Neutral Bars | \$422.02 |
| KV8354M | 54 Way, 3 Row MCB Enclosure without Earth & Neutral Bars | \$455.78 | |



WATERPROOF DISTRIBUTION BOARDS



COMPLETE SWITCHBOARD SOLUTION

Simply join your KV Distribution Board to the KV9331 Enclosure for a complete Switchboard solution.

The KV9331 comes complete with gear tray and can be joined using the AVS-16 Connection Gland for IP65 protection.

IP65 WATERPROOF ENCLOSURE



| | | |
|----------------|--|-----------------|
| KV9331 | Waterproof Empty Enclosure (583x295x182mm) with Elastic Membrane Glands | \$472.86 |
| KV9331M | Waterproof Empty Enclosure (583x295x182mm) with Metric Knock-out Entries | \$472.86 |

KV DISTRIBUTION BOARD EARTH AND NEUTRAL BARS



| | | |
|---------------|--|----------------|
| KVFC03 | Fixconnect Earth and Neutral Bar set suitable for KV9103 to KV6103 | \$11.70 |
|---------------|--|----------------|

| | | |
|---------------|--|----------------|
| KVFC04 | Fixconnect Earth and Neutral Bar set suitable for KV9104 to KV6104 | \$14.48 |
|---------------|--|----------------|

| | | |
|---------------|--|----------------|
| KVFC06 | Fixconnect Earth and Neutral Bar set suitable for KV9106 to KV6106 | \$16.80 |
|---------------|--|----------------|



| | | |
|---------------|--|----------------|
| KVFC09 | Fixconnect Earth and Neutral Bar set suitable for KV9109 to KV6109 | \$18.80 |
|---------------|--|----------------|

| | | |
|---------------|---|----------------|
| KVFC12 | Fixconnect Earth and Neutral Bars for KV9112/M, KV8112M, KV9220/M | \$62.94 |
|---------------|---|----------------|

| | | |
|---------------|--|----------------|
| KVFC18 | Fixconnect Earth and Neutral Bars for KV9118/M, KV8118/M, KV9230/M | \$84.04 |
|---------------|--|----------------|



| | | |
|---------------|---|-----------------|
| KVFC24 | Fixconnect for KV9224/M, KV9330/M, KV9440/M, KV9336/M, KV9448/M | \$133.45 |
|---------------|---|-----------------|

| | | |
|---------------|---|-----------------|
| KVFC36 | Fixconnect for KV9236/M, KV9354/M, KV9350/M | \$171.73 |
|---------------|---|-----------------|

KV DISTRIBUTION BOARD ACCESSORIES



| | | |
|---------------|-----------------------|---------------|
| AVS-16 | Connection Gland IP65 | \$9.19 |
|---------------|-----------------------|---------------|

| | | |
|---------------|-----------------------|---------------|
| EVS-16 | Connection Gland IP54 | \$1.84 |
|---------------|-----------------------|---------------|

| | | |
|--------------|------------------------------------|----------------|
| KVES1 | Lock set for KV Boards 12 - 54 Way | \$42.97 |
|--------------|------------------------------------|----------------|

| | | |
|--------------|----------------------------------|----------------|
| KVES3 | Lock set for KV Boards 3 - 9 Way | \$42.97 |
|--------------|----------------------------------|----------------|

| | | |
|--------------|------------------------------|----------------|
| KVES2 | Spare keys for KVES1 & KVES3 | \$25.46 |
|--------------|------------------------------|----------------|

| | | |
|--------------|----------------------|---------------|
| AS-12 | Cover Strip - 12 Way | \$8.29 |
|--------------|----------------------|---------------|

| | | |
|--------------|----------------------|----------------|
| AS-18 | Cover Strip - 18 Way | \$11.66 |
|--------------|----------------------|----------------|



| | | |
|---------------|--|----------------|
| KVEB12 | Cable Entry Cover for 12 Way KV Switchboards | \$18.12 |
|---------------|--|----------------|

| | | |
|---------------|--|----------------|
| KVEB18 | Cable Entry Cover for 18 Way KV Switchboards | \$26.85 |
|---------------|--|----------------|

| | | |
|---------------|---|---------------|
| KVEB03 | Cable Entry Cover for 3 Way KV Switchboards | \$4.53 |
|---------------|---|---------------|

| | | |
|---------------|---|---------------|
| KVEB04 | Cable Entry Cover for 4 Way KV Switchboards | \$5.14 |
|---------------|---|---------------|



| | | |
|---------------|---|---------------|
| KVEB06 | Cable Entry Cover for 6 Way KV Switchboards | \$6.20 |
|---------------|---|---------------|

| | | |
|---------------|---|---------------|
| KVEB09 | Cable Entry Cover for 9 Way KV Switchboards | \$7.20 |
|---------------|---|---------------|



| | | |
|--------------|---|----------------|
| KV-PM | Metric flange plate for KV switchboards | \$20.32 |
|--------------|---|----------------|

| | | |
|---------------|--|----------------|
| KVPL 2 | KV Switchboard Sealing Device - 12 to 54 way | \$16.13 |
|---------------|--|----------------|

| | | |
|---------------|--|----------------|
| KVPL 3 | KV Switchboard Sealing Device - 3 to 9 way | \$16.13 |
|---------------|--|----------------|

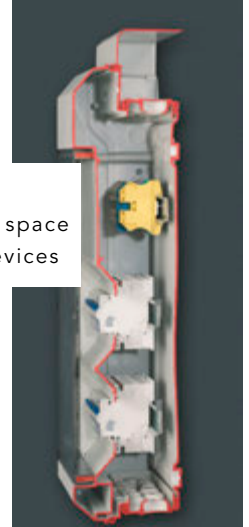
WATERPROOF "EXTRA" BOARDS

TECHNICAL INFORMATION



KV EXTRA

With additional space for electrical devices



WATERPROOF "EXTRA" DISTRIBUTION BOARDS



| | | |
|---------------|---|----------|
| KV9220 | 12 Way, 2 Row MCB Enclosure without Earth & Neutral Bars - with EXTRA space | \$222.54 |
| KV9230 | 18 Way, 2 Row MCB Enclosure without Earth & Neutral Bars - with EXTRA space | \$288.51 |
| KV9330 | 24 Way, 3 Row MCB Enclosure without Earth & Neutral Bars - with EXTRA space | \$297.71 |
| KV9440 | 36 Way, 4 Row MCB Enclosure without Earth & Neutral Bars - with EXTRA space | \$417.41 |
| KV9350 | 36 Way, 3 Row MCB Enclosure without Earth & Neutral Bars - with EXTRA space | \$477.27 |



| | | |
|----------------|---|----------|
| KV9220M | 12 Way, 2 Row MCB Enclosure without Earth & Neutral Bars - with EXTRA space | \$222.54 |
| KV9230M | 18 Way, 2 Row MCB Enclosure without Earth & Neutral Bars - with EXTRA space | \$288.51 |
| KV9330M | 24 Way, 3 Row MCB Enclosure without Earth & Neutral Bars - with EXTRA space | \$297.71 |
| KV9440M | 36 Way, 4 Row MCB Enclosure without Earth & Neutral Bars - with EXTRA space | \$417.41 |
| KV9350M | 36 Way, 3 Row MCB Enclosure without Earth & Neutral Bars - with EXTRA space | \$477.27 |

KV Distribution Boards have IP65 Integrated Cable Glands - Boards with "...M" have Metric Knock-Outs



Order Code in Bold: Stocked Item
Order Code in light: Subject to availability



WATERPROOF DISTRIBUTION BOARDS

IP65 ENYSUN WEATHERPROOF BOARDS - NO E/N BARS - PLAIN SIDES



| | | |
|-----------------|--|-----------------|
| KVPC8104 | Ensun Polycarbonate 4.5 Way Distribution Board | \$81.06 |
| KVPC8109 | Ensun Polycarbonate 9 Way Distribution Board | \$103.07 |

IP65 ENYSUN WEATHERPROOF BOARDS - WITH E/N BARS - METRIC KNOCKOUTS



| | | |
|-----------------|--|-----------------|
| KVPC9103 | Ensun Polycarbonate 3 Way Distribution Board | \$93.31 |
| KVPC9104 | Ensun Polycarbonate 4.5 Way Distribution Board | \$116.01 |
| KVPC9106 | Ensun Polycarbonate 6 Way Distribution Board | \$121.37 |
| KVPC9109 | Ensun Polycarbonate 9 Way Distribution Board | \$148.80 |
| KVPC9112 | Ensun Polycarbonate 12 Way Distribution Board | \$234.55 |

SAFETY CIRCUITS - IP66 CABLE JUNCTION BOXES & ENCLOSURES



| | | |
|---------------|---|----------------|
| KVBP04 | Ensun Outdoor Mounting Plate for KVPC8104 - Stainless Steel | \$56.57 |
| KVBP09 | Ensun Outdoor Mounting Plate for KVPC8109 - Stainless Steel | \$64.10 |

