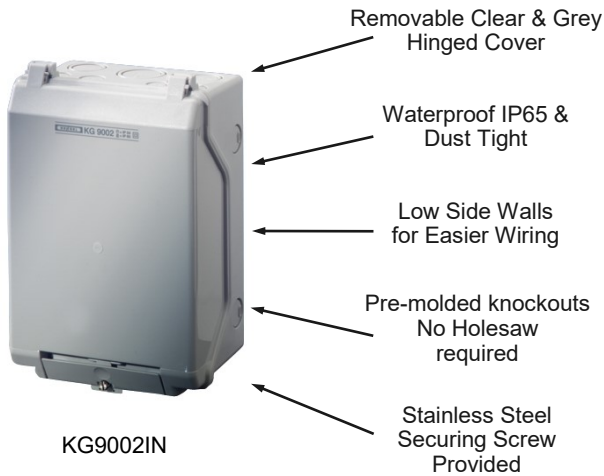


TECHNICAL INFORMATION



KG9002IN

KG WATERPROOF ENCLOSURE RANGE

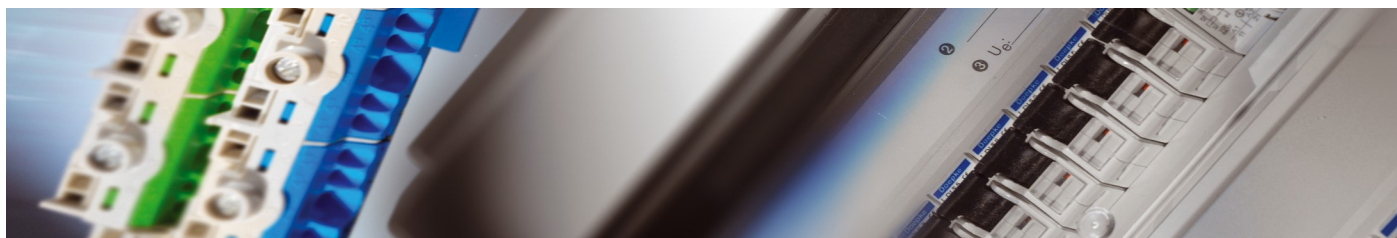
This very versatile and cost effective enclosure range has many advantages. The KG range has a high impact base and cover, pre-moulded knockouts and can be used with a separately supplied gear plate. The cover is removable and along with the low side walls access to equipment and wiring is easy.

The KG product range can also be supplied as a complete distribution board with protection cover, mounting rail, earth/neutral bars and legend kit.

IP65 WATERPROOF ENCLOSURE WITH HINGED LID



KG9001	Waterproof Empty Enclosure with Hinged Lid (253x136x115mm) - IP65	\$55.38
KG9002	Waterproof Empty Enclosure with Hinged Lid (253x168x115mm) - IP65	\$61.93
KG9003	Waterproof Empty Enclosure with Hinged Lid (253x217x115mm) - IP65	\$69.95
KG9001IN	Waterproof Empty Enclosure with Grey Hinged Lid (253x136x115mm) - IP65	\$55.38
KG9002IN	Waterproof Empty Enclosure with Grey Hinged Lid (253x168x115mm) - IP65	\$61.93
KG9003IN	Waterproof Empty Enclosure with Grey Hinged Lid (253x217x115mm) - IP65	\$69.95
KG901C	4.5 Way Distribution Board including Earth & Neutral Bars - IP65	\$77.25
KG902C	6 Way Distribution Board including Earth & Neutral Bars - IP65	\$87.37
KG903C	9 Way Distribution Board including Earth & Neutral Bars - IP65	\$99.90
KGMP01	Mounting Plate for KG9001	\$3.64
KGMP02	Mounting Plate for KG9002	\$4.30
KGMP03	Mounting Plate for KG9003	\$5.24
KGTS01	Din Rail for KG9001	\$3.20
KGTS02	Din Rail for KG9002	\$4.30
KGTS03	Din Rail for KG9003	\$4.59
KGPC01	Protection Cover for KG9001	\$15.73
KGPC02	Protection Cover for KG9002	\$18.87
KGPC03	Protection Cover for KG9003	\$21.57
KGPN01	Earth and Neutral Bar for KG9001	\$18.81
KGPN02	Earth and Neutral Bar for KG9002	\$18.81
KGPN03	Earth and Neutral Bar for KG9003	\$22.76
3310167	KG901C Distribution Board MCB Identification Set	\$5.73
3310168	KG902C Distribution Board MCB Identification Set	\$6.75
3310169	KG903C Distribution Board MCB Identification Set	\$7.90
AVS-16	Connection Gland - IP65	\$8.73
EVS-16	Connection Gland - IP54	\$1.75



TECHNICAL INFORMATION



KV9354



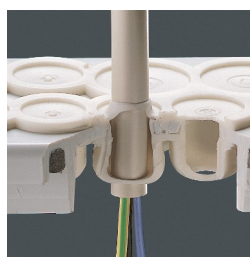
Multiple enclosure fixing points - can be fixed to pillars



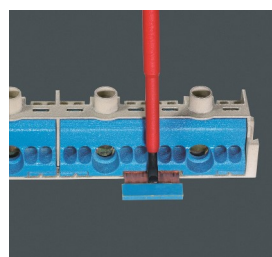
More space for wiring, convenient access to the wiring due to low walls



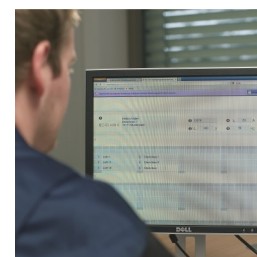
Perfect installation solution for cable trunking



IP65 Cable entry with elastic membrane glands



Neutral separable for various potentials via plug-in jumper



Editable circuit identification template at www.hensel-electric.de

IP65 DISTRIBUTION BOARDS WITH ELASTIC MEMBRANE GLANDS & E/N BARS



KV9103

3 Way Distribution Board including Earth & Neutral Bars

\$75.79



KV9104

4.5 Way Distribution Board including Earth & Neutral Bars

\$84.53

KV9106

6 Way Distribution Board including Earth & Neutral Bars

\$94.88

KV9109

9 Way Distribution Board including Earth & Neutral Bars

\$107.68

KV9112

12 Way, 1 Row Distribution Board including Earth & Neutral Bars

\$167.61

KV9118

18 Way, 1 Row Distribution Board including Earth & Neutral Bars

\$233.16

KV9224

24 Way, 2 Row Distribution Board including Earth & Neutral Bars

\$247.75

KV9236

36 Way, 2 Row Distribution Board including Earth & Neutral Bars

\$314.80

KV9336

36 Way, 3 Row Distribution Board including Earth & Neutral Bars

\$327.92

KV9448

48 Way, 4 Row Distribution Board including Earth & Neutral Bars

\$451.78

KV9354

54 Way, 3 Row Distribution Board including Earth & Neutral Bars

\$517.36

IP65 DISTRIBUTION BOARDS WITH ELASTIC MEMBRANE GLANDS WITHOUT E/N BARS



KV8103	3 Way MCB Enclosure without Earth & Neutral Bars	\$56.84
KV8104	4.5 Way MCB Enclosures without Earth & Neutral Bars	\$65.58
KV8106	6 Way MCB Enclosures without Earth & Neutral Bars	\$78.70
KV8109	9 Way MCB Enclosures without Earth & Neutral Bars	\$87.45
KV8112	12 Way, 1 Row MCB Enclosure without Earth & Neutral Bars	\$136.99
KV8118	18 Way, 1 Row MCB Enclosure without Earth & Neutral Bars	\$192.38
KV8224	24 Way, 2 Row MCB Enclosure without Earth & Neutral Bars	\$211.34
KV8236	36 Way, 2 Row MCB Enclosure without Earth & Neutral Bars	\$266.70
KV8336	36 Way, 2 Row MCB Enclosure without Earth & Neutral Bars	\$273.99
KV8448	48 Way, 4 Row MCB Enclosure without Earth & Neutral Bars	\$400.78
KV8354	54 Way, 3 Row MCB Enclosure without Earth & Neutral Bars	\$432.84

IP65 DISTRIBUTION BOARDS WITH METRIC PRE-MOULDED KNOCK-OUTS WITH E/N BARS



KV7103	3 Way Distribution Board including Earth & Neutral Bars	\$75.79
KV7104	4.5 Way Distribution Board including Earth & Neutral Bars	\$84.53
KV7106	6 Way Distribution Board including Earth & Neutral Bars	\$94.88
KV7109	9 Way Distribution Board including Earth & Neutral Bars	\$107.68
KV9112M	12 Way, 1 Row Distribution Board including Earth & Neutral Bars	\$167.61
KV9118M	18 Way, 1 Row Distribution Board including Earth & Neutral Bars	\$233.16
KV9224M	24 Way, 2 Row Distribution Board including Earth & Neutral Bars	\$247.75
KV9236M	36 Way, 2 Row Distribution Board including Earth & Neutral Bars	\$314.80
KV9336M	36 Way, 3 Row Distribution Board including Earth & Neutral Bars	\$327.92
KV9448M	48 Way, 4 Row Distribution Board including Earth & Neutral Bars	\$451.78
KV9354M	54 Way, 3 Row Distribution Board including Earth & Neutral Bars	\$517.36

IP65 DISTRIBUTION BOARDS WITH METRIC PRE-MOULDED KNOCK-OUTS WITHOUT E/N BARS



KV6103	3 Way MCB Enclosure without Earth & Neutral Bars	\$56.84
KV6104	4.5 Way MCB Enclosures without Earth & Neutral Bars	\$65.58
KV6106	6 Way MCB Enclosures without Earth & Neutral Bars	\$78.70
KV6109	9 Way MCB Enclosures without Earth & Neutral Bars	\$87.45
KV8112M	12 Way, 1 Row MCB Enclosure without Earth & Neutral Bars	\$136.99
KV8118M	18 Way, 1 Row MCB Enclosure without Earth & Neutral Bars	\$192.38
KV8224M	24 Way, 2 Row MCB Enclosure without Earth & Neutral Bars	\$211.34
KV8236M	36 Way, 2 Row MCB Enclosure without Earth & Neutral Bars	\$266.70
KV8336M	36 Way, 3 Row MCB Enclosure without Earth & Neutral Bars	\$273.99
KV8448M	48 Way, 4 Row MCB Enclosure without Earth & Neutral Bars	\$400.78
KV8354M	54 Way, 3 Row MCB Enclosure without Earth & Neutral Bars	\$432.84

WATERPROOF DISTRIBUTION BOARDS

HENSEL



COMPLETE SWITCHBOARD SOLUTION

Simply join your KV Distribution Board to the KV9331 Enclosure for a complete Switchboard solution.

The KV9331 comes complete with gear tray and can be joined using the AVS-16 Connection Gland for IP65 protection.

IP65 WATERPROOF ENCLOSURE



KV9331	Waterproof Empty Enclosure (583x295x182mm) with Elastic Membrane Glands	\$449.06
KV9331M	Waterproof Empty Enclosure (583x295x182mm) with Metric Knock-out Entries	\$449.06

KV DISTRIBUTION BOARD EARTH AND NEUTRAL BARS



KVFC03	Fixconnect Earth and Neutral Bar set suitable for KV9103 to KV6103	\$11.11
KVFC04	Fixconnect Earth and Neutral Bar set suitable for KV9104 to KV6104	\$13.75
KVFC06	Fixconnect Earth and Neutral Bar set suitable for KV9106 to KV6106	\$15.95
KVFC09	Fixconnect Earth and Neutral Bar set suitable for KV9109 to KV6109	\$17.85
KVFC12	Fixconnect Earth and Neutral Bars for KV9112/M, KV8112M, KV9220/M	\$59.77
KVFC18	Fixconnect Earth and Neutral Bars for KV9118/M, KV8118/M, KV9230/M	\$79.81
KVFC24	Fixconnect for KV9224/M, KV9330/M, KV9440/M, KV9336/M, KV9448/M	\$126.73
KVFC36	Fixconnect for KV9236/M, KV9354/M, KV9350/M	\$163.09

KV DISTRIBUTION BOARD ACCESSORIES

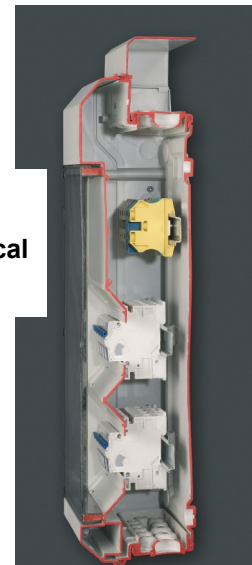


AVS-16	Connection Gland IP65	\$8.73
EVS-16	Connection Gland IP54	\$1.75
KVES1	Lock set for KV Boards 12 - 54 Way	\$40.81
KVES3	Lock set for KV Boards 3 - 9 Way	\$24.18
KVES2	Spare keys for KVES1 & KVES3	\$40.81
AS-12	Cover Strip - 12 Way	\$7.87
AS-18	Cover Strip - 18 Way	\$11.07
KVEB12	Cable Entry Cover for 12 Way KV Switchboards	\$17.21
KVEB18	Cable Entry Cover for 18 Way KV Switchboards	\$25.50
KVEB03	Cable Entry Cover for 3 Way KV Switchboards	\$4.30
KVEB04	Cable Entry Cover for 4 Way KV Switchboards	\$4.88
KVEB06	Cable Entry Cover for 6 Way KV Switchboards	\$5.89
KVEB09	Cable Entry Cover for 9 Way KV Switchboards	\$6.84
KV-PM	Metric flange plate for KV switchboards	\$19.29
KVPL 2	KV Switchboard Sealing Device - 12 to 54 way	\$15.32
KVPL 3	KV Switchboard Sealing Device - 3 to 9 way	\$15.32

WATERPROOF "EXTRA" BOARDS

HENSEL

TECHNICAL INFORMATION



WATERPROOF "EXTRA" DISTRIBUTION BOARDS



KV9220	12 Way, 2 Row MCB Enclosure without Earth & Neutral Bars - with EXTRA space	\$211.34
KV9230	18 Way, 2 Row MCB Enclosure without Earth & Neutral Bars - with EXTRA space	\$273.99
KV9330	24 Way, 3 Row MCB Enclosure without Earth & Neutral Bars - with EXTRA space	\$282.73
KV9440	36 Way, 4 Row MCB Enclosure without Earth & Neutral Bars - with EXTRA space	\$396.40
KV9350	36 Way, 3 Row MCB Enclosure without Earth & Neutral Bars - with EXTRA space	\$453.25
KV9220M	12 Way, 2 Row MCB Enclosure without Earth & Neutral Bars - with EXTRA space	\$211.34
KV9230M	18 Way, 2 Row MCB Enclosure without Earth & Neutral Bars - with EXTRA space	\$273.99
KV9330M	24 Way, 3 Row MCB Enclosure without Earth & Neutral Bars - with EXTRA space	\$282.73
KV9440M	36 Way, 4 Row MCB Enclosure without Earth & Neutral Bars - with EXTRA space	\$396.40
KV9350M	36 Way, 3 Row MCB Enclosure without Earth & Neutral Bars - with EXTRA space	\$453.25



KV Distribution Boards have IP65 Integrated Cable Glands - Boards with "..M" have Metric Knock-Outs



IP65 ENYSUN WEATHERPROOF BOARDS - NO E/N BARS - PLAIN SIDES



KVPC8104	Enysun Polycarbonate 4.5 Way Distribution Board	\$76.98
KVPC8109	Enysun Polycarbonate 9 Way Distribution Board	\$97.88

IP65 ENYSUN WEATHERPROOF BOARDS - WITH E/N BARS - METRIC KNOCKOUTS



KVPC9103	Enysun Polycarbonate 3 Way Distribution Board	\$88.62
KVPC9104	Enysun Polycarbonate 4.5 Way Distribution Board	\$110.17
KVPC9106	Enysun Polycarbonate 6 Way Distribution Board	\$115.26
KVPC9109	Enysun Polycarbonate 9 Way Distribution Board	\$141.31
KVPC9112	Enysun Polycarbonate 12 Way Distribution Board	\$222.74

SAFETY CIRCUITS - IP66 CABLE JUNCTION BOXES & ENCLOSURES



KVBP04	Enysun Outdoor Mounting Plate for KVPC8104 - Stainless Steel	\$53.72
KVBP09	Enysun Outdoor Mounting Plate for KVPC8109 - Stainless Steel	\$60.87